



CENTRIFUGAL PUMPS

SERIES SGM

for **INDUSTRIAL GASES**



Technical features

- ▶ Direct power transmission
- ▶ Mechanical seal in rulon
- ▶ Inducer to minimize required NPSH
- ▶ Low noise emission (< 80 dB)

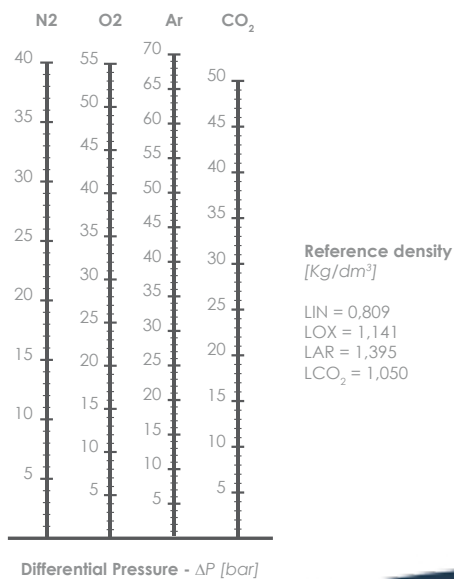
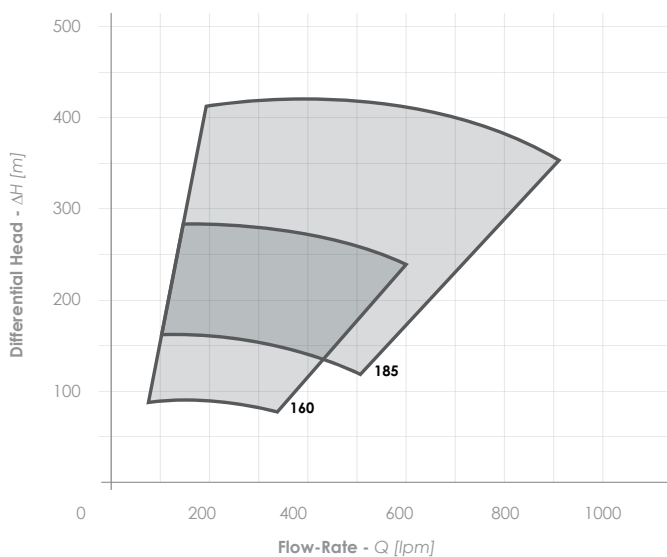
Applications

- ▶ Liquid transfer from mobile tanks to storage tanks
- ▶ Liquid transfer from storage tanks flow conditions referred to fixed prevalence and capacity

Liquids transferred

- ▶ LIN, LOX, LAR, LCO₂, LN₂O

PERFORMANCE		
Model	SGM 160	SGM 185
Transmission	Gearbox	
Lubrication	Mineral oil for LIN /LAR / LCO ₂ Fomblin for LOX /LN ₂ O	
Min - max flow rate [lpm]	45 - 540	85 - 910
Min - max differential head [m]	29 - 225	110 - 420
Max suction pressure [bar]	5 for LIN LOX LAR	
	25 for LCO ₂ LN ₂ O	
Maximum allowable pressure [bar]	30	35



Optional

- ▶ Filter
- ▶ Flexible hose for suction, return and by-pass lines
- ▶ Leakage detection by temperature sensor
- ▶ Flushing system with nitrogen gas
- ▶ Temperature sensor for cooling down
- ▶ Electrical control panel
- ▶ Motor suitable for VFD
- ▶ Customized electrical control panel available on demand
- ▶ Completely automated systems available on demand
- ▶ Mobile skid available on demand

Tests and controls

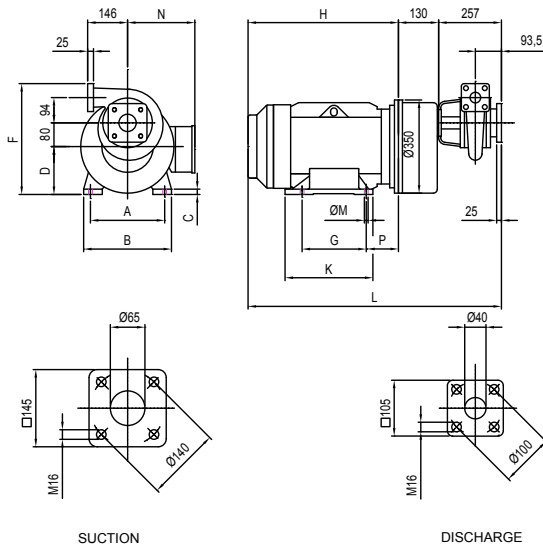
- ▶ Dimensional control of each mechanical component before assembling
- ▶ Running test of each pump with LIN before delivery

Standards

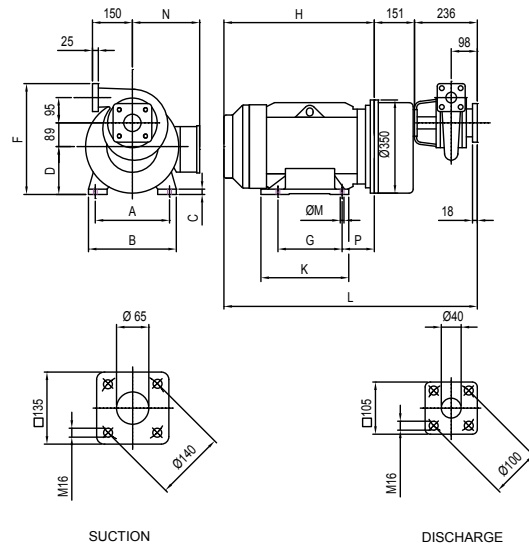
- Designed according to:
- ▶ European Directive 2006/42/CE Machinery
 - ▶ European Directive PED 97/23/CE
 - ▶ EIGA/IGC/CGA guidelines

GENERAL DIMENSIONS

SGM 160



SGM 185



SGM 160

Available motor power [kW]	Motor size	A	B	C	D	F	G	H	K	L	M	N	P	Weight [Kg]
11	160M	254	315	20	160	387	210	540	332	927	14	245	108	145
15														
18.5	160L	254	315	20	160	387	254	540	332	927	14	245	108	145
22	180M	279	350	22	180	407	241	580	320	967	14	245	121	175

SGM 185

Available motor power [kW]	Motor size	A	B	C	D	F	G	H	K	L	M	N	P	Weight [Kg]
22	180M	279	350	22	180	417	241	580	320	967	14	245	121	220

Data can be subjected to change.



Certified quality management system